



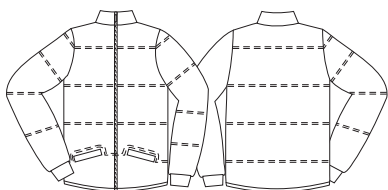
LINHA  
**INVERNO**

---

# JAKUETA / SUÉTER / MOLETON

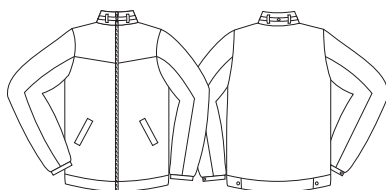
### Cód 1500/1

Jaqueta impermeável



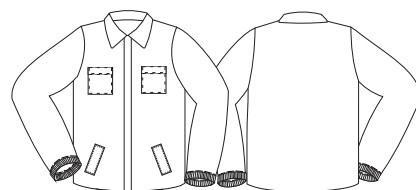
### Cód 1500/2

Jaqueta forrada, com recorte horizontal superior em V na frente, com botão no punho, recorte superior lateral nas mangas, gola alta, com bolsos embutidos inferiores



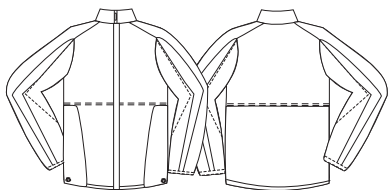
### Cód 1500/3

Jaqueta forrada, com recorte horizontal superior em V na frente, com botão no punho, recorte superior lateral nas mangas, gola alta, com bolsos embutidos inferiores



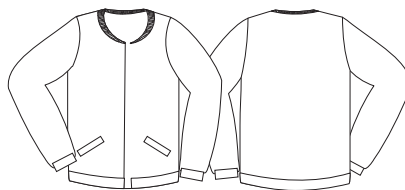
### Cód 1500/4

Jaqueta forrada, gola alta, com recortes nas mangas, recorte horizontal ao meio, na frente e costa, recorte lateral inferior na frente, com bolsos inferiores



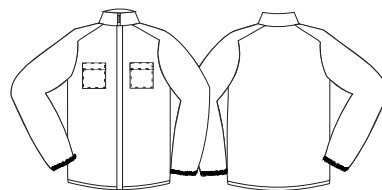
### Cód 1500/5

Jaqueta forrada, gola alta, com recortes nas mangas, recorte horizontal ao meio, na frente e costa, recorte lateral inferior na frente, com bolsos inferiores



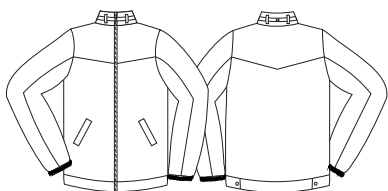
### Cód 1500/6

Jaqueta haglan, forrada, com punho de elástico, com bolso superior



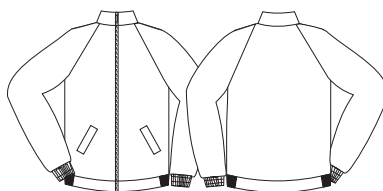
### Cód 1500/7

Jaqueta forrada, com punho de elástico, recorte superior na frente em V, pala em V, com bolsos inferiores



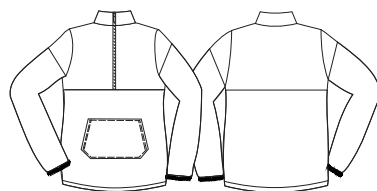
### Cód 1500/8

Jaqueta haglan, forrada com punho de elástico, com bolsos inferiores (S.V)



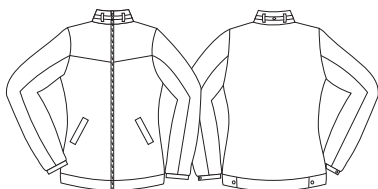
### Cód 1500/9

Agasalho masculino, com recorte horizontal na frente, costa e manga, com bolso canguru



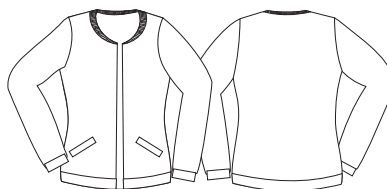
### Cód 1600/2

Jaqueta feminina forrada, com recorte horizontal superior em V na frente, com botão no punho, recorte superior lateral nas mangas, gola alta, com bolsos embutidos inferiores



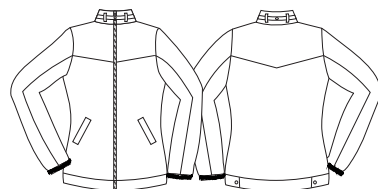
### Cód 1600/5

Jaqueta feminina forrada, gola alta, com recortes nas mangas, recorte horizontal ao meio, na frente e costa, recorte lateral inferior na frente, com bolsos inferiores



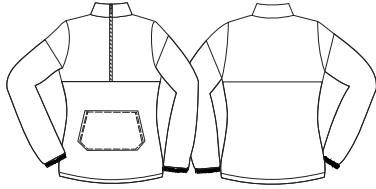
### Cód 1600/7

Jaqueta feminina forrada, com punho de elástico, recorte superior na frente em V, pala em V, com bolsos inferiores



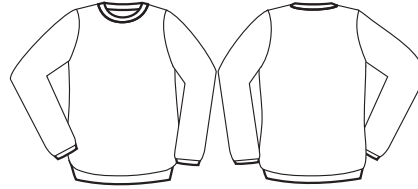
### Cód 1600/8

Agasalho feminino, com recorte horizontal na frente, costa e mangas, com bolso canguru



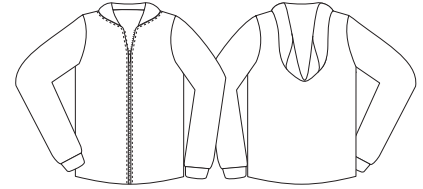
### Cód 2600/1

Moletom



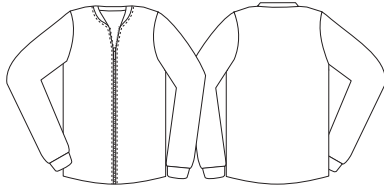
### Cód 2600/2

Moletom com zíper, com capuz



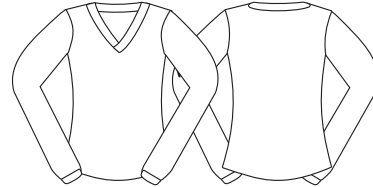
### Cód 2600/3

Moletom com zíper, sem capuz



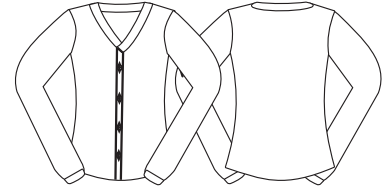
### Cód 2500/1

Suéter feminino fechado



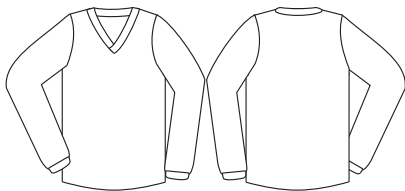
### Cód 2500/2

Suéter feminino aberto



### Cód 2500/3

Suéter masculino fechado



### Cód 2500/4

Suéter masculino aberto

